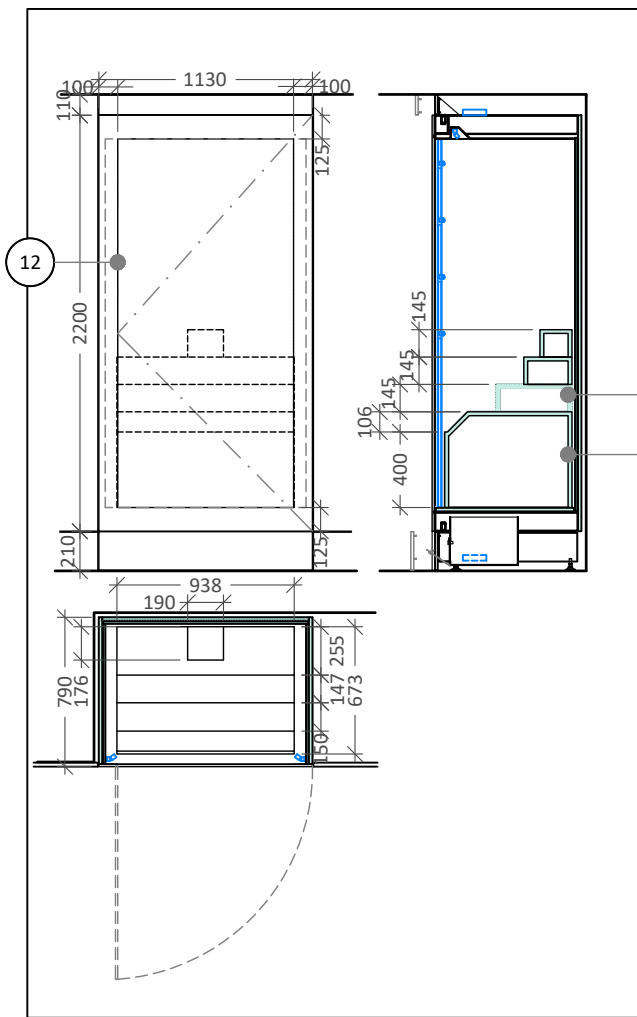
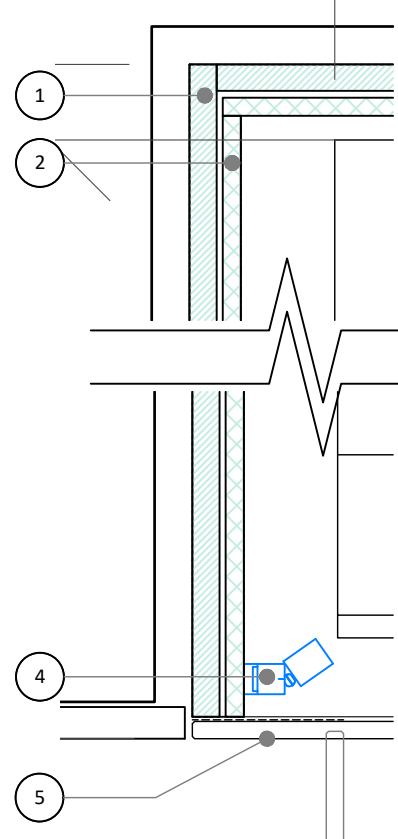


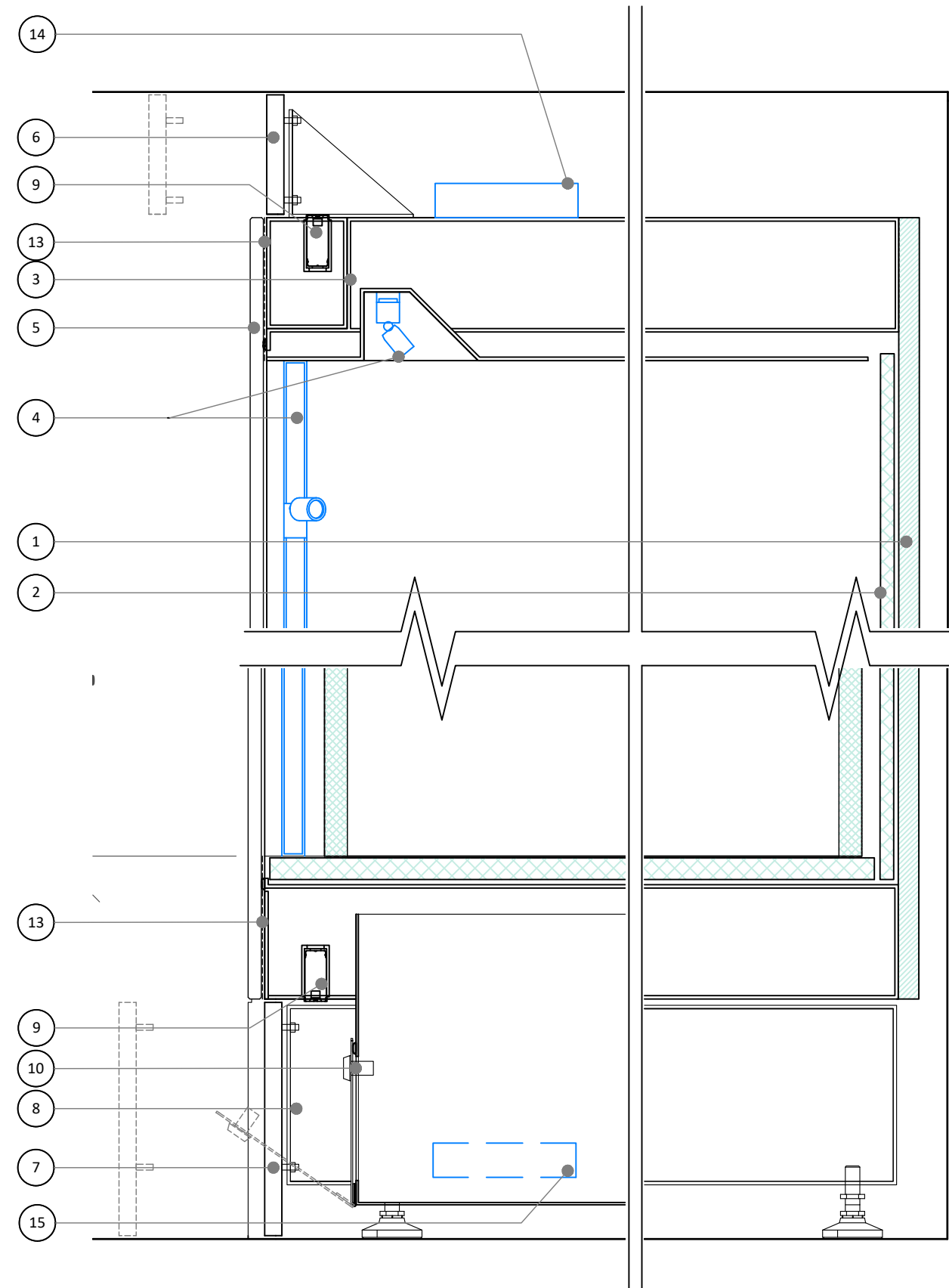
NOTES	
A	All showcase glazing to be low iron non reflective laminated glass to BS5544 or BS EN 356: 2000 UV bonded with chamfered and polished edges with compressible seals where needed. (see showcase specification for further details)
KEY	
1	Showcase structural back and side, 18mm dacrylate sealed or foil wrapped ZF MDF, powder coated steel or similar to form the carcass
2	12mm Forex fabric wrapped internal dress panel. Note a thicker dress panel may be required depending on the carcass construction
3	Powder coated metal top hood with angled recess or the case lighting
4	UFO Ionic MX LED lighting system fittings as specified by the lighting designer all finished in a custom RAL
5	Showcase glass door bonded to metal rail and hinge mechanism with paint back glass to hide frame and lights as indicated
6	Powder coated metal above case infill and access panel by showcase specialist. Manufacturer to design to allow for easy museum staff removal and refitting, potentially with hinged or easy lift out access
7	Powder coated metal below case access panel by showcase specialist. Manufacturer to design to allow for easy museum staff removal and refitting, potentially with hinged or easy lift out access
8	Support frame with levelling feet
9	Hidden Abloy museum grade locks above and below case. Note access panels to be easily handled to allow access
10	Lockable conditioning tray on a separate suite to house Artsorb / ProSORB cassettes or similar incorporated into showcase base to allow for access separately from showcase door.
11	20mm spray painted forex display plinth with caption slope and lip as shown
12	20mm fabric wrapped Forex object display blocks
13	Indicates extent of 'paint back' on glass
14	Transformer location for gallery ceiling / track lighting
15	Transformer location for showcase lighting adjacent to the conditioning tray, manufacturer to ensure this is easily accessed and ventilated



PLAN / SECTION / ELEVATION
Scale 1:40



PLAN SECTION DETAILS
Scale 1:5



CROSS SECTION DETAILS
Scale 1:5

Key Plan

General Notes
PLEASE DO NOT SCALE FROM THIS DRAWING

1. ANY CONSTRUCTION DETAILS INDICATED ON THIS DRAWING REPRESENT 'DESIGN INTENT' ONLY AND ARE SHOWN MERELY TO INDICATE FEASIBILITY.
2. THE CONTRACTOR IS ENTIRELY RESPONSIBLE FOR THE STRUCTURAL INTEGRITY, PRACTICALITY AND NEATNESS OF ALL WORK UNDERTAKEN.
3. ALL TIMBER TO FSC CERTIFIED.
4. ALL MATERIALS TO BE CLASS 1 OR EQUIVALENT, UNLESS STATED OTHERWISE.
5. ANY BASE-BUILD DIMENSIONS OR INDICATIONS SHOWN HERE ARE BASED UPON ARCHITECT'S DRAWINGS. SITE DIMENSIONS MAY DIFFER. CONTRACTORS MUST SURVEY RELEVANT AREAS. ALL DIMENSIONS ARE IN MM.
6. DRAWINGS MUST BE READ IN CONJUNCTION WITH RELEVANT SPECIFICATION DOCUMENTS.

Project Specific Notes

- A. All showcase details to be read in conjunction with the Showcase Schedule and Specification 1839/HMTC/RS/SPEC_01 and 02
- B. For final case dimensions of all island and wall cases and the internal plinths please see 1839/HMTC/RS/SC series drawings
- C. For all lighting please also see Lighting Designer's Specification and Schedule
- D. For all graphics see the Graphics Schedule and Specification

Rev	Date	Description

Scale 1:40 / 1:5 @ A3 Date Issued 04.01.24

Drawn MJH Checked AMC

Project Stage
Detail Design

Revision
-

Project
Holburne Treasure Chamber

Drawing Title
Typical Wall Showcase Details

Project No. 1839 Drawing No. HTMC/RS/DE_02

realSTUDIOS

75 Oglander Road, London, SE15 4DD
+44 (0) 7928 890593
contact@realstudios.co.uk
www.realstudios.co.uk

© 2024